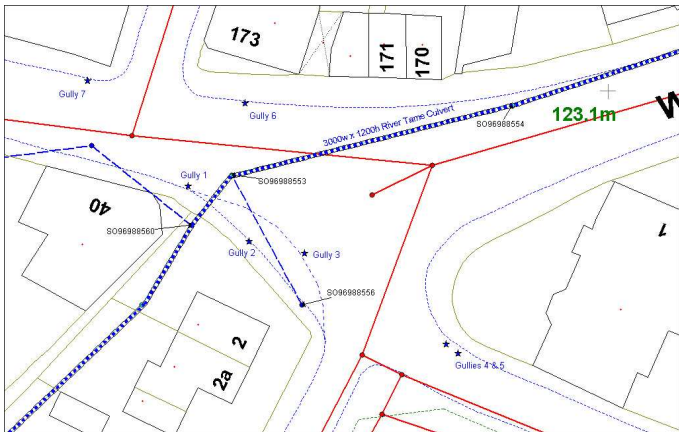
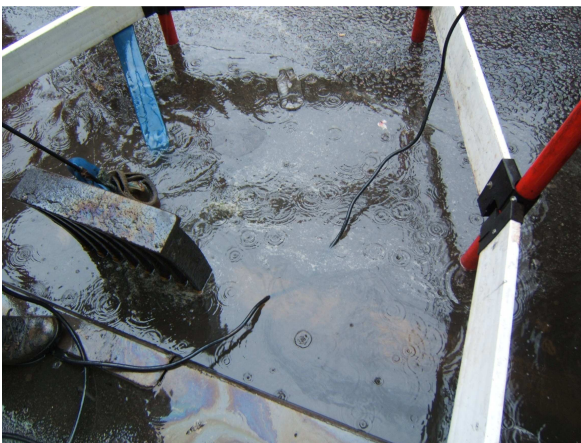


## Scheme, Walsall Road, Willenhall, highway flooding.



The highway drainage in this area was unable to cope with extreme rainfall events although there should be ample storm water capacity in the River Tame culvert, which runs through the area. Our remit was to investigate the gullies, their connections and outfall to the River or sewer. We mapped each gully and observed them in heavy rain and found that only two of the gullies worked adequately. During the storm we also lifted covers on the River Tame culvert and found that while water levels had risen there was still more than sufficient capacity for the floodwater.



Pumping out a flooded gully prior to inspecting the connection, doing this in flood conditions allowed us to establish the exact nature of the problem.



We found the gully connection had collapsed due to tree roots, we pinpointed the collapse point to enable an accurate dig up.



After jetting a blocked connection and removing litter, leaf debris and silt we discovered that the connection into the River Tame Culvert had been partially bricked up. While we do not fully understand why this was done we have quoted to enter the culvert and make good the connection.

**Young Technical Services**  
15 High Street.  
Wheaton Aston  
Staffordshire  
ST19 9NP

Telephone: 07734 038754  
Facsimile: 01785 841609  
Website: [www.youngtechnicalservices.com](http://www.youngtechnicalservices.com)  
Email: [drainageservices@btinternet.com](mailto:drainageservices@btinternet.com)